

Camp Registration

Check One:

Morning Only (8AM - 11:30 AM)

In-District - Free

Out-of-District - \$750

Afternoon Only (11:30AM-2PM **Bring Lunch!!**)

In-District - \$700

Out-of-District - \$750

Full Day Program (8AM - 2PM)

In-District - \$700

Out-of-District - \$1500

Aftercare (2PM - 3PM)

Weekly \$100 (up to 2 children)

Six Weeks (\$500) (up to 2 children)

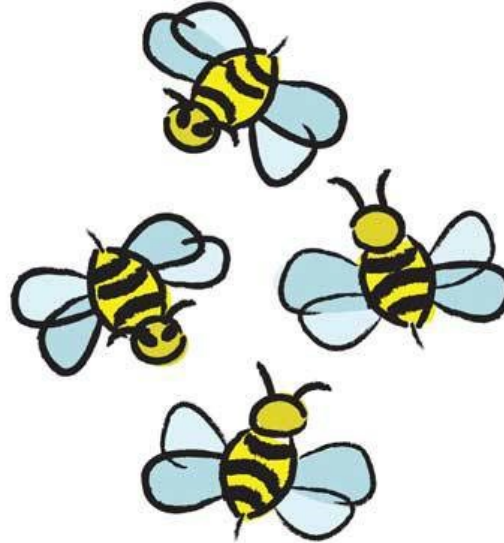
Full Day Program with Aftercare:

In-District - \$1200

Out-of-District - \$2000

REDUCED RATES AVAILABLE FOR IN-DISTRICT STUDENTS!

Check if you'd like to be considered for a need-based reduction.



Bridgehampton School

July 5th

through

August 10th

Monday - Thursday

8AM - 2PM

2685 Montauk Highway
PO Box 3021
Bridgehampton, NY
11932

Phone: 631-537-0271
Fax: 631-537-9038
lfavre@bridgehampton.k12.ny.us
www.bridgehampton.k12.ny.us

Summer Camp at the Hive 2017



Bridgehampton School

July 5th

through

August 10th

Monday - Thursday

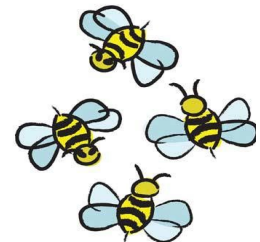
8AM - 2PM

(after care until 3PM available)

Grades K-6 * Drama, Robotics
and Farm-to-Table

*Students entering grades K-6

www.bridgehampton.k12.ny.us



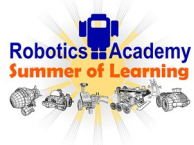
Student Name: _____

Grade in September: _____

Register by May 2nd, to assure your space!!!

Mixing it Up...

We will continue to mix it up at **The Hive** this summer, offering a camp-like (educational) atmosphere for students who join us for a summer program. The idea this year is to end our **Camp** with a **Family Day Celebration**.



Camp begins at 8 AM daily with athletic warm ups where older campers support the younger campers in games and activities—a great way to get the brain going.

Students round out their morning by rotating through robotics, drama activities, and farm-to-table fun in the greenhouse and culinary classroom. (8:30 – 11:30 AM).



Three groups will be formed and will rotate through the planned projects and activities.

Students bring their own lunch (11:30 - 12:30 PM) and following lunch from 12:30 - 2:00 PM, they will attend theme-based activities with their age group (including but not limited to: reader/writer workshops; arts and crafts; dance; inventing; designing; building).

Aftercare will available through 3PM and will include recess and game-like activities.

For students entering Grades K-through 6**

Complete Both Sides and Return to:

Vanessa Rojano

Clerk/Receptionist

Bridgehampton School by May 2nd.

NAME: _____

GRADE: _____ (In September)

My child is interested in the Summer at the Hive

Program at the Bridgehampton School.

July 5- August 10 (NO camp on Fridays)

Select the program of your choice on the [back](#).

Parent Signature: _____

Parent (Print): _____

Summer Phone Contact: _____

Emergency Contact:
Name _____

Phone: _____

Emergency Contact:
Name _____

Phone: _____

PLEASE NOTE: A minimum number of students for each of the 3 groups is needed for the program to run—so sign up quickly so we reach our quota!

First Come - First Served! Be Sure to Get in on the Action!